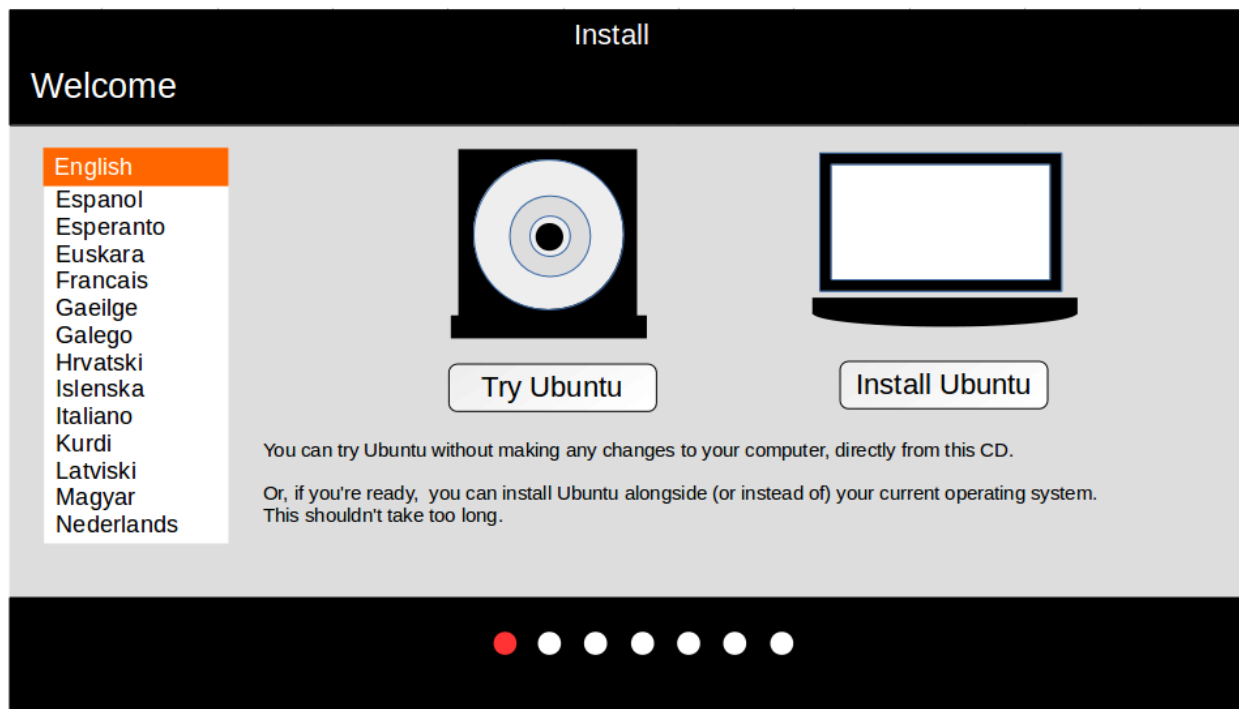


CAUTION

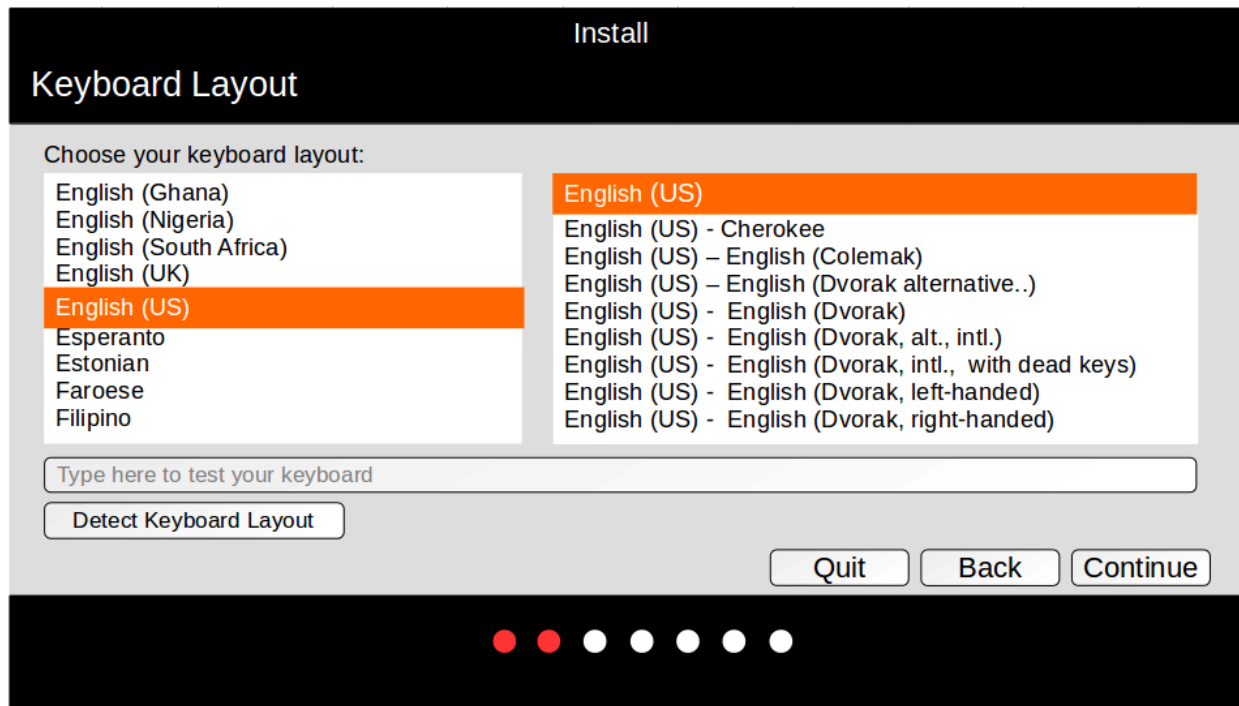
Be careful when installing or modifying software. Backup your files before performing any tasks which could result in the loss of data. Weidman Enterprises is not responsible for any loss due to following the instructions on this website.

Ubuntu Installation from DVD

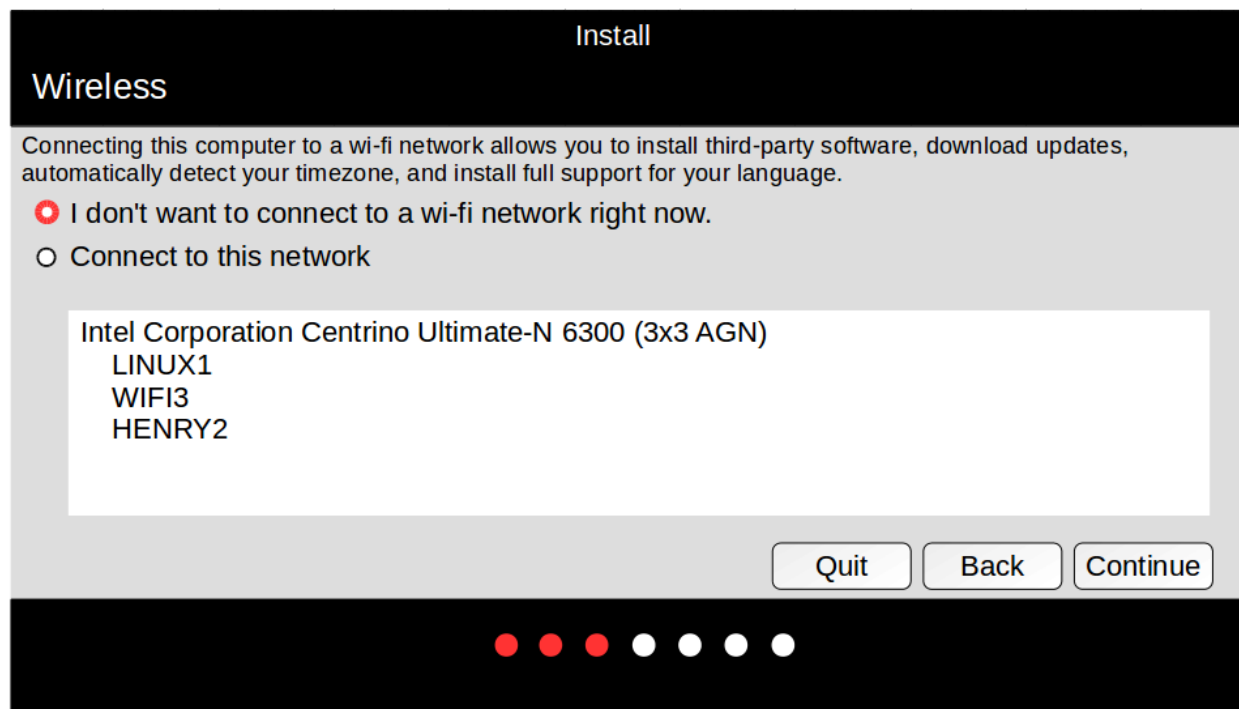
1. Welcome/Language



2. Keyboard Layout



3. Wireless



4. Updates and other software

Install

Installation type

This computer currently has Ubuntu 16.04 LTS on it. What would you like to do?

☐ Reinstall Ubuntu 16.04
Documents, music, and other personal files will be kept. Installed software will be kept where possible. System wide settings will be cleared.

☐ Erase Ubuntu 16.04 and reinstall
Warning: This will delete all your Ubuntu 16.04 programs, documents, photos, music and any other files.

☐ Install Ubuntu 18.04 alongside Ubuntu 16.04
Documents, music, and other personal files will be kept. You can choose which operating system you want each time the computer starts up.

☒ Erase disk and install Ubuntu.
Warning: This will delete all your Ubuntu 16.04 programs, documents, photos, music and any other files in all operating systems.

☐ Encrypt the new Ubuntu Installation for security.
You will choose a security key in the next step.

☐ Use LVM with the new Ubuntu Installation
This will set up Logical Volume Management. It allows taking snapshots and easier partition resizing.

☐ Something else
You can create or resize partitions yourself, or choose multiple partitions for Ubuntu.

Quit

Back

Install Now

5. Installation type

Install

Installation type

This computer currently has Ubuntu 16.04 LTS on it. What would you like to do?

☐ Reinstall Ubuntu 16.04
Documents, music, and other personal files will be kept. Installed software will be kept where possible. System wide settings will be cleared.

☐ Erase Ubuntu 16.04 and reinstall
Warning: This will delete all your Ubuntu 16.04 programs, documents, photos, music and any other files.

☐ Install Ubuntu 18.04 alongside Ubuntu 16.04
Documents, music, and other personal files will be kept. You can choose which operating system you want each time the computer starts up.

☒ Erase disk and install Ubuntu.
Warning: This will delete all your Ubuntu 16.04 programs, documents, photos, music and any other files in all operating systems.

☐ Encrypt the new Ubuntu Installation for security.
You will choose a security key in the next step.

☐ Use LVM with the new Ubuntu Installation
This will set up Logical Volume Management. It allows taking snapshots and easier partition resizing.

☐ Something else
You can create or resize partitions yourself, or choose multiple partitions for Ubuntu.

Quit

Back

Install Now

Confirm Installation type

Write the changes to disks?

If you continue, the changes listed below will be written to the disks. Otherwise, you will be able to make further changes manually.

WARNING: This will destroy all data on any partitions you have removed as well as on the partitions that are going to be formatted.

The partition tables of the following devices are changed:
SCSI2 (0,0,0) (sda)

The following partitions are going to be formatted:
partition #1 of SCSI2 (0,0,0) (sda) as ext4


Go Back

Continue

6. Where are you?

Install

Where are you?



New York

BackContinue

7. Who are you?

Install

Who are you?

Your name: ✓

Your computer's name: ✓
The name it uses when it talks to other computers.

Pick a username: ✓

Choose a password: Fair password

Confirm your password: ✓

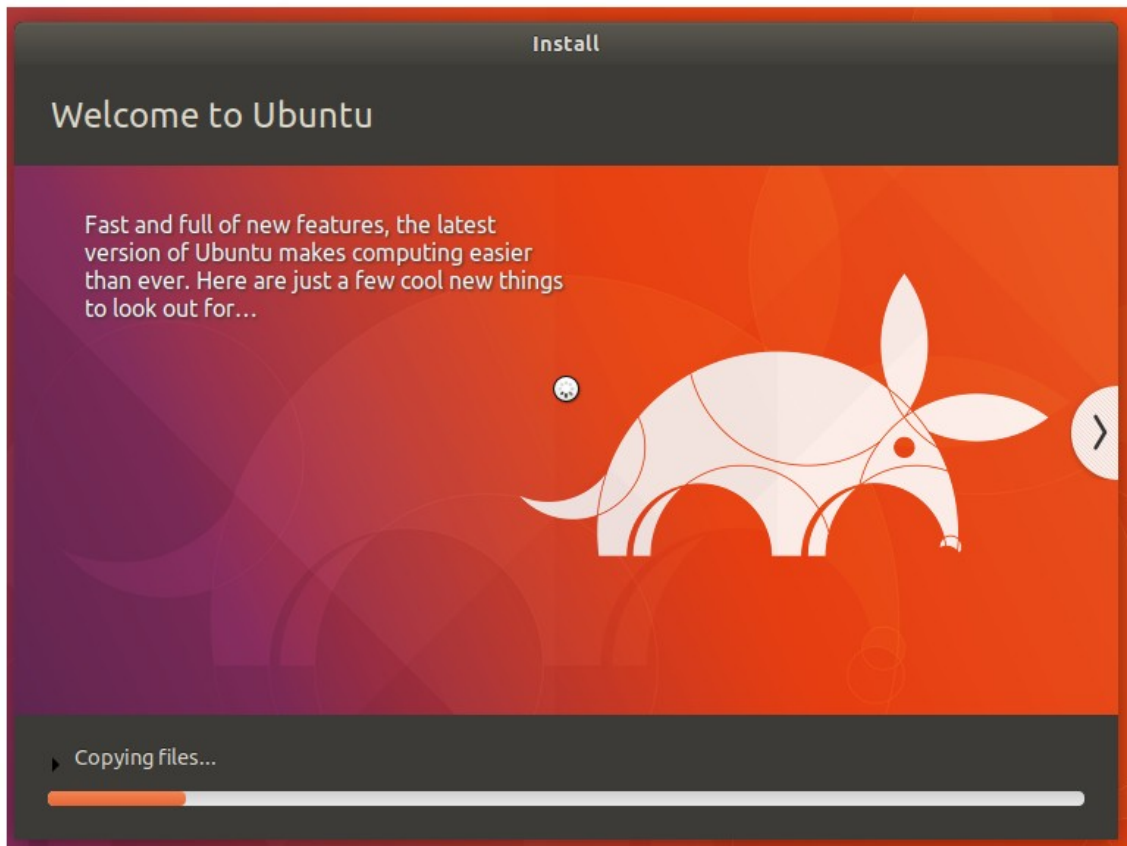
☐ Log in automatically
☒ Require my password to log in
☐ Encrypt my home folder

Back

Continue

● ● ● ● ● ● ● ●

8. Welcome to Ubuntu, etc...



9. Installation Complete



10. Remove media...

Remove the media when prompted to do so.